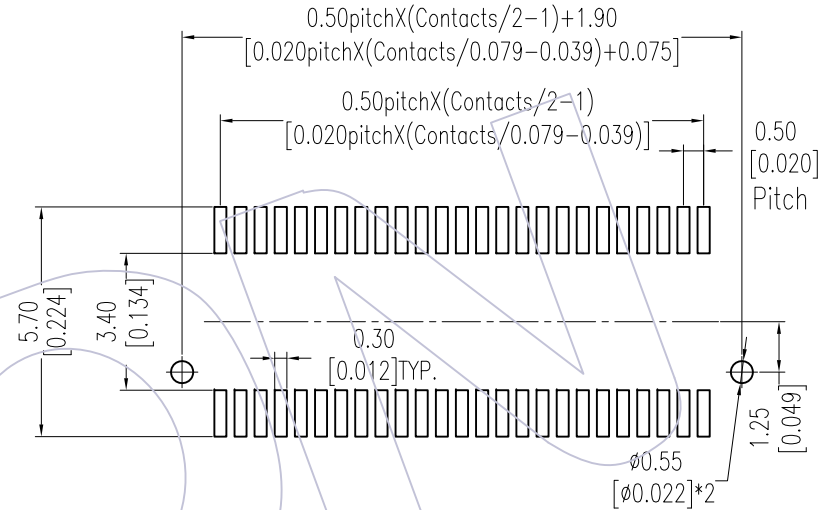
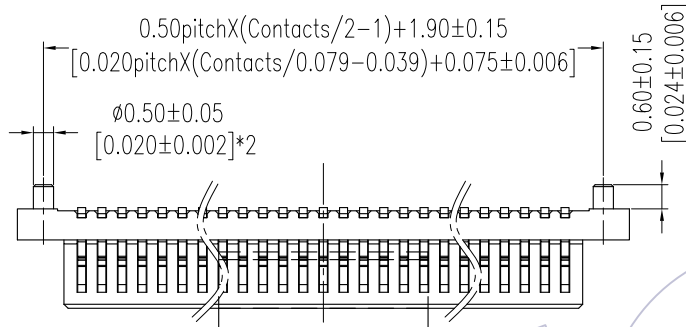


# HSF

Recommended P. C. B Layout (Top Side)  
(PCB BOARD TOLERANCE ± 0.05)

NOTES:  
Current Rating:0.5A  
Voltage Rating:50V AC/DC  
Contact Resistance:50milliohm Max  
Insulation Resistance:100Megohm Min  
Operation Temperature:-20°Cto+105°C

Housing Material:PA9T+30%G.F(UL94V-0)  
Contact Material:Phosphor Bronze  
Contact plating:Au or Sn over Ni

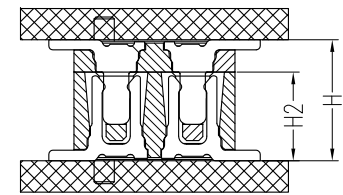
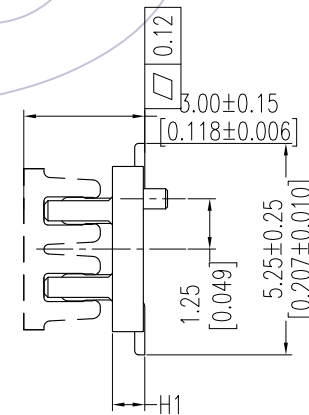
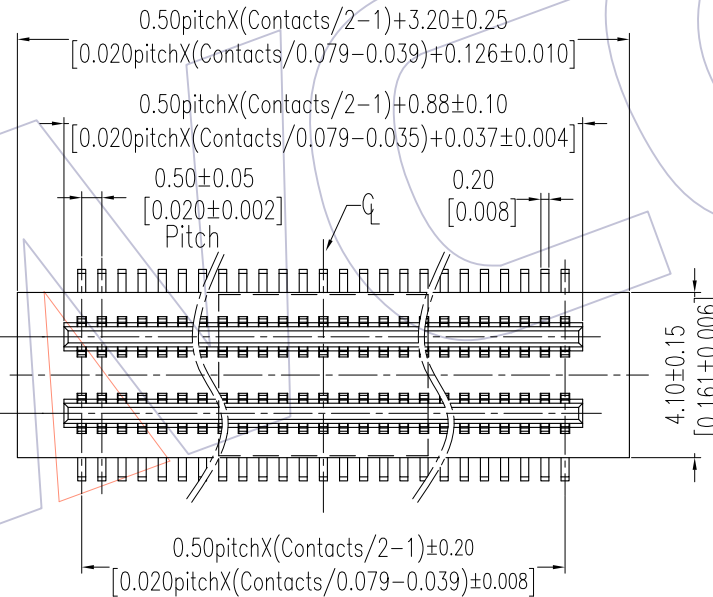


## Ordering Information

3620-P XXX - XXX XX R 01

No.of Pins    Housing High    Contact Plating  
T=Tube    P=Tube+CAP    R=Tape&Reel+CAP  
G1=3u"Gold    G2=5u"Gold

ASS'Y HIGH(H)	PLUG(H1)	SOCKET(H2)
3.00	0.80	2.20
3.50	0.80	2.70
4.00	1.00	3.00
4.50	1.50	3.00
5.00	2.00	3.00
5.50	1.50	4.00
6.00	2.00	4.00



Assembly

REV	DATE	MODIFICATION DESCRIPTION	CHANGE	OPERATION		DRAW	DATE	SCALE	FIT	PART NO.	TITLE:	Customer NO.
				X.X	±0.40							
				X.XX	±0.25	CHECK	DATE	SIZE	A4	3620-PXXX-XXXXXR01	0.50mm B TO B MALE 180° SMT TYPE	
				X.XXX	±0.15	APPROVE	DATE	SHEET	1/1			
A0	2012/06/27	NEW		Angle	± 3'			PROJ.	⌀			
				DIM	TOL							

**WCON**

Http: www.wcon.com

WCON-Dongguan    WCON-Kunshan  
Tel: +86 769 85358920    Tel: +86 512 57468408  
Fax: +86 769 85358915    Fax: +86 512 57468468  
E-mail: sales@wcon.com    E-mail: salesks@wcon.com